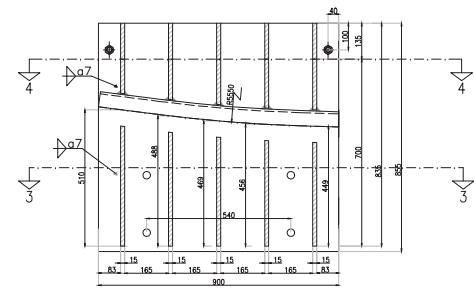
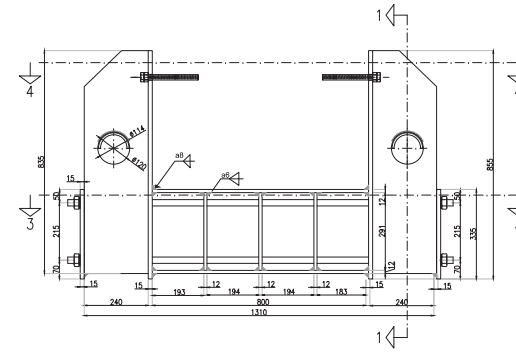


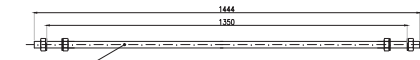
SEZIONE 1-1  
SCALA 1:10 (QUOTE IN mm)



VISTA FRONTALE  
SCALA 1:10 (QUOTE IN mm)



MEZZO TUBO PASSACAVO - Sc. 1:10



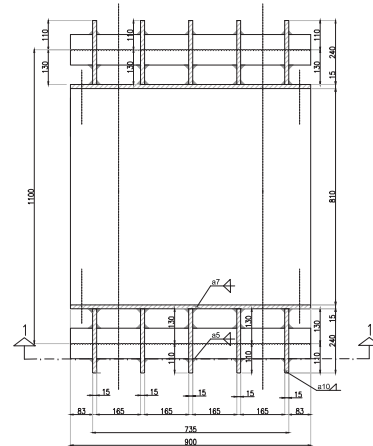
BARRA MANTENIMENTO CARTER - M24 CL. 8.8



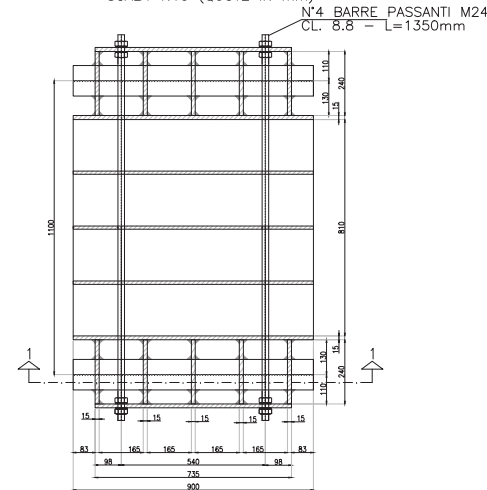
BARRA FILETTATA - M20 CL. 8.8

N.B.: PER LE SALDATURE IL VALORE "A"  
FA RIFERIMENTO ALL'ALTEZZA DI GOLA DELLA SALDATURA  
ES.: A7=10x10

SEZIONE 4-4  
SCALA 1:10 (QUOTE IN mm)

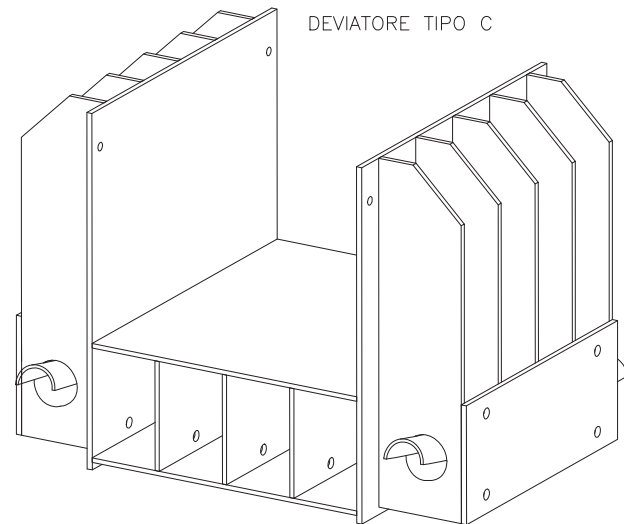


SEZIONE 3-3  
SCALA 1:10 (QUOTE IN mm)

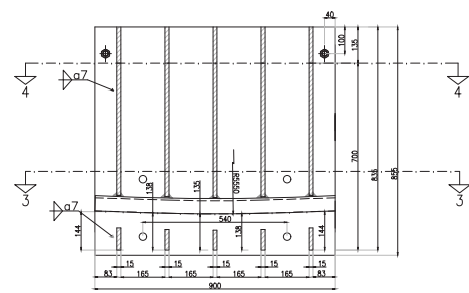


N°4 BARRE PASSANTI M24  
CL. 8.8 - L=1350mm

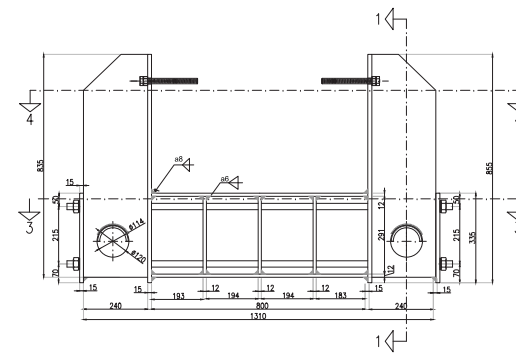
DEVIATORE TIPO B



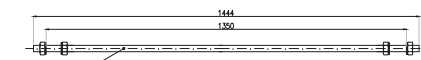
SEZIONE 1-1  
SCALA 1:10 (QUOTE IN mm)



VISTA FRONTALE  
SCALA 1:10 (QUOTE IN mm)



MEZZO TUBO PASSACAVO - Sc. 1:10



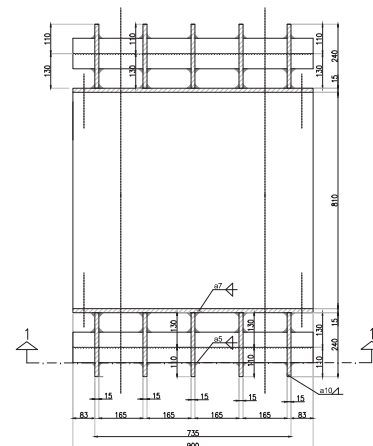
BARRA MANTENIMENTO CARTER - M24 CL. 8.8



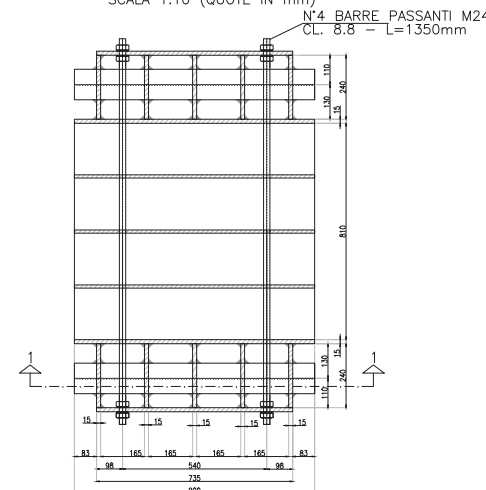
BARRA FILETTATA - M20 CL. 8.8

N.B.: PER LE SALDATURE IL VALORE "a"  
FA RIFERIMENTO ALL'ALTEZZA DI GOLA DELLA SALDATURA  
ES.: A7=10x10

SEZIONE 4-4  
SCALA 1:10 (QUOTE IN mm)



SEZIONE 3-3  
SCALA 1:10 (QUOTE IN mm)



N°4 BARRE PASSANTI M24  
CL. 8.8 - L=1350mm

DEVIATORE TIPO C

**autostrade** // per l'italia

AUTOSTRADA (A14) : BOLOGNA-BARI-TARANTO  
TRATTO: PESCARA - TERMOLI

RIPRISTINO PRECOMPRESIONE ESTERNA  
DEVIATORI A E B